



Hydraulic Test Equipment Product Overview



Hydraulic measurement and control

Spares, Repairs and Calibration

The benefits of hydraulic testing

Testing hydraulic systems

For anyone who has experienced a hydraulic component failure when they could least afford it, the Webtec range of test equipment holds the answer.

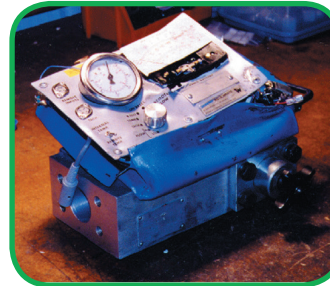
If your system is down and oil is collecting around your feet, the downtime is costing you \$\$\$\$'s a day. You need to quickly identify which component has failed, fix it, test the system and get back to work.

A Webtec portable tester will allow you, even if you are working alone, to easily and safely simulate operating conditions using the built-in load valve to help pinpoint the fault. Many customers use portable testers to validate component operation in repair and production environments. The illustration below demonstrates a DHCR tester being used with two flow meters and a phototach to measure flow, pressure, temperature and speed.

For safety, Webtec testers include the unique INTERPASS™ protection system. In the event of over-pressurisation, burst discs built-in to the load valve will safely bypass oil internally through the valve and back to tank. NOT externally into the environment or onto you.

Webtec has a policy of innovation and continuous improvement that has led to the range you see here with unique features such as the bi-directional pressure balanced load valve, internal burst discs and simplified controls.

Webtec Service Centre



Service required?

We specialise in re-calibration of all hydraulic test equipment, whether from the Webtec range or another manufacturer's. Our service department is equipped for electronic and mechanical repair work with flow, pressure and temperature calibration facilities.

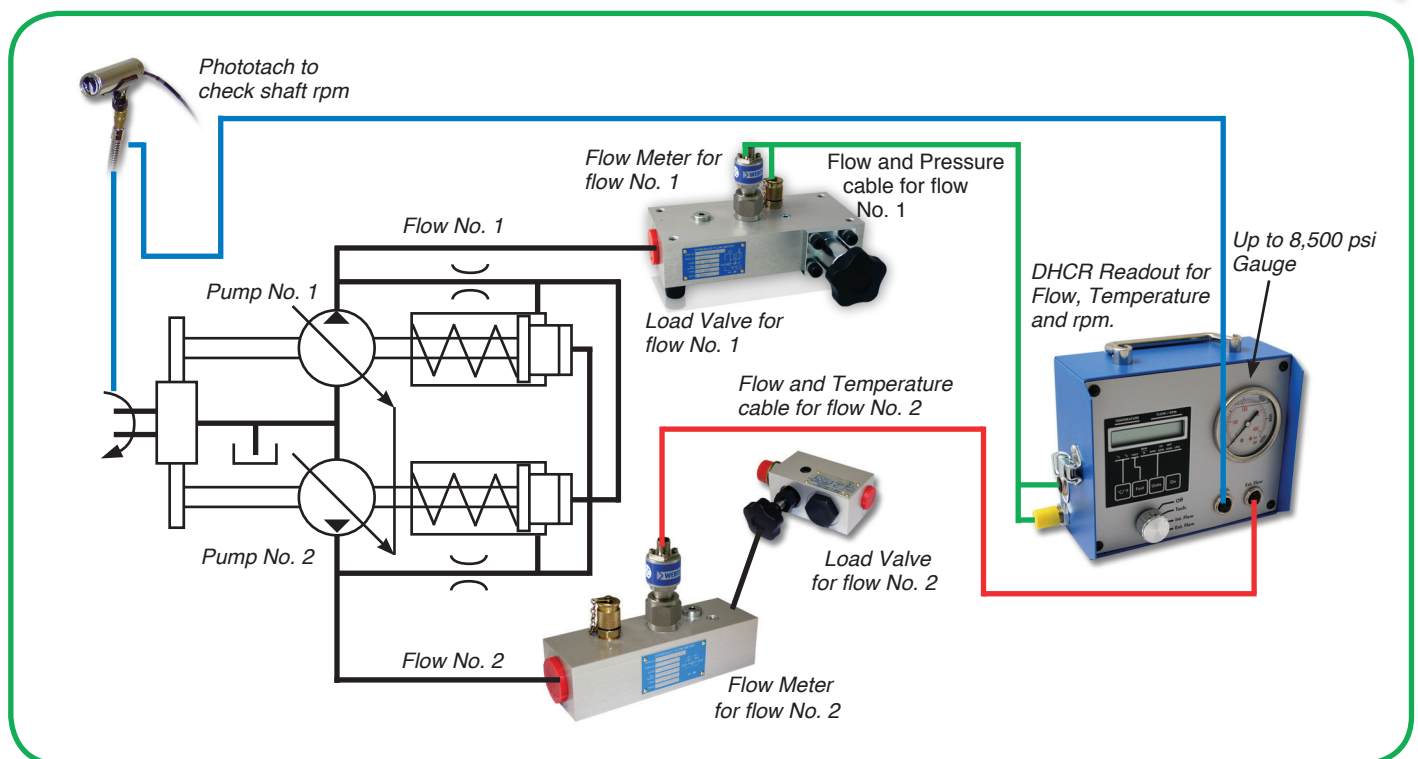
Quality

Our Manufacturing division operates in accordance with ISO 9001 and all of our test references are traceable to national & international standards.

As a manufacturing company Webtec Products Ltd is ideally suited to servicing and repairing both hydraulic components and test equipment.

Further information

Please see contact details on back page.



Flow Condition Monitoring

Analogue and digital flow indicators

Accuracy: See below
Pressure: Up to 3500 psi
Ports: SAE, NPT or BSP
Applications:
 Hydraulic condition monitoring and test stands

Flow: Up to 150 gpm
Type: Unidirectional
 Reversible

Accuracy: 4% FSD
Pressure: Up to 6000 psi
Ports: SAE, NPSF or BSP
Applications:
 Hydraulic condition monitoring and test stands

Flow: Up to 100 gpm
Type: See below

Low pressure flow indicators



WPC Series

- Ideal for tank line monitoring
- From 0.05 up to 30 gpm at 1000 psi
- Available in aluminium for oil
- Low cost, accuracy 5% FS

High pressure flow indicators



FI 750 Series

- Unidirectional, up to 48 gpm and 6000 psi
- Optional thermometer
- Available in aluminium for oil, or brass for water

Medium pressure flow indicators



WPB Series

- Economical solution, accuracy 4% FS
- From 0.05 up to 150 gpm at 3500 psi
- Switches and analogue output available
- Suitable for oil, water-glycol & phosphate ester



FI 1500 Series

- Unidirectional, up to 100 gpm and 5000 psi
- Optional thermometer
- Available in aluminium for oil, or brass for water

FlowHUB complete monitoring solution



FlowHUB Series

- Flow and temperature monitoring - Measure, display, switch, transmit
- Ideal for condition monitoring
- 5 flow sizes cover range 0.25 - 100 gpm at 3000 or 6000 psi.
- Optional switches and analogue output (mA, V)



RFI 1000 Series

- Reversible, up to 54 gpm and 6000 psi
- Built-in thermometer
- Available in aluminium for oil

Diagnostic Test Equipment

Portable hydraulic testers

Accuracy: 4% FSD
Pressure: Up to 6000 psi
Ports: SAE, JIC or BSP
Applications:
 Agricultural, small-medium mobile machinery

Flow: Up to 54 gpm
Use: See below

Accuracy: See below
Pressure: Up to 7000 psi
Ports: SAE or BSP
Applications:

Flow: Up to 210 gpm
Use: Bidirectional

Mobile machinery and large fixed installations

Pressure Test Kits



PT100 Series

- Complete kits for pressure testing
- Assembled to customer specification
- Fit test points wherever required in the circuit
- Kit includes gauges, hoses and test points

Simplified digital testers



DHT '1' Series

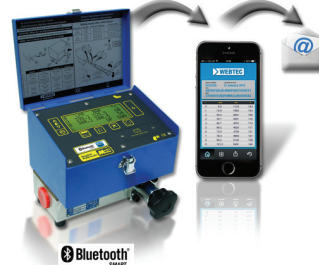
- Measure flow (1% FS), pressure and temperature
- Simple 'On / Off' control
- Simulate machine performance using loading valve
- INTERPASS[™] protected



RFIK Series

- Improved design, low pressure drop
- Measure flow (reversible), pressure and temperature
- Built-in loading valve, INTERPASS[™] protected
- No batteries required

Digital Hydraulic Multimeter



DHM '3' Series

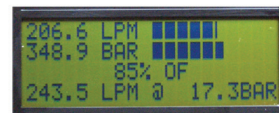
- Measure flow (1% IR), pressure, peak, power and temperature
- Log results and email a test certificate instantly via QuickCert[™] App for iPhone[®]
- Easy to use, four standard screens
- Measure hydraulic pump efficiency with P-Q test
- Simulate machine performance using loading valve
- INTERPASS[®] protected

Separate loading valve



HV Series

- Simulate machine performance (Bidirectional)
- Five models: up to 400 gpm/6000 psi
- Safe and clean to use, INTERPASS[™] protected
- Use separately or with LT / CT flow meters



P-Q Test
 Volumetric Efficiency

Diagnostic Test Equipment

Portable hydraulic testers

5

Accuracy: 1% IR
Pressure: Up to 7000 psi
Ports: SAE or BSP
Applications:
Mobile machinery and large fixed installations

Flow: Up to 400 gpm
Use: Bidirectional

Accuracy: 1% FS
Pressure: Up to 7000 psi
Ports: SAE or BSP
Applications:
Mobile machinery and large fixed installations

Flow: Up to 210 gpm
Use: Bidirectional

Digital reading testers with remote inputs



DHT '2' Series

- Measure flow, pressure and temperature
- Secondary flow and speed inputs
- Simulate machine performance using loading valve
- INTERPASSTM protected

Analog testers with remote input



HT '2' Series

- Measure flow, pressure and temperature
- External speed input
- Simulate machine performance using loading valve
- INTERPASSTM protected



DHCR Series

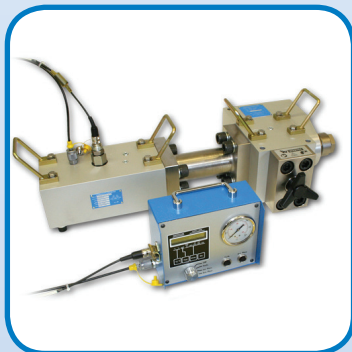
- Remote readout for use with LT / LTR Series
- Measure flow, pressure and temperature
- Secondary flow and speed inputsA

OEM Test kits



- Custom test kits built to your specification
- Ideal tool kits for service engineers
- OEM branding and marketing solutions available
- Used by major mobile machinery OEMs worldwide

Digital test kit (up to 400 gpm)



DHCR1500R Kit

- Measure flow, pressure, temperature and optional speed
- Kit designed for hydraulic testing of very large mobile machinery
- Optional load valve rated to 1500 lpm and 420 bar to simulate machine load



OEMs worldwide

Diagnostic Test Equipment

Hand held hydraulic dataloggers and readouts

Sensor Recognition (SR):

Sensors can be plugged into any input of an HPM readout, automatic recognition of the type, range and calibration of the sensor. No user input.

Application: Mobile hydraulic system testing

Intelligent Digital (ID):

Digital sensors (CAN protocol) with automatic sensor recognition, connect in-line with one another using shorter cables. Uniquely identified by the datalogger.

Application: In-depth hydraulic system fault-finding

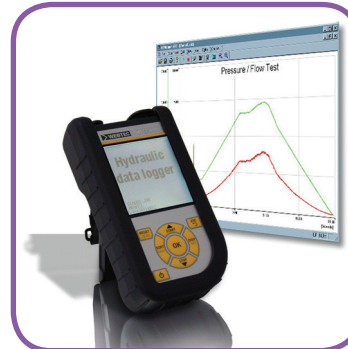
Digital pressure gauge



HPM110 Series

- Digital pressure gauge with peak capture
- Two pressure ranges available 100 / 600 bar
- Backlit display
- Change engineering units

Hydraulic data loggers (SR & ID)



HPM4000 Series

- Two models - choose between SR and ID
- Choose between 2 or 3 input version
- USB connectivity, Nano-USB up to 4GB
- Supplied with HPMComm software

Flow meters (SR & ID)



CT/CTR Series

- Precision turbine flow meters
- 9 models cover range 0.25 - 200 gpm, up to 7000 psi
- Additional top ports
- With or without built-in loading valve

Hydraulic data loggers (SR)



HPM540

- 4 input data loggers with multi-line display
- High speed data capture and storage
- USB connectivity
- Supplied with HPMComm software

Sensors (SR & ID)



Pressure / temperature sensors

- Pressure transducers rated up to 15000 psi
- Temperature sensor
- Speed sensor
- Current & voltage input converters for custom sensors

Hydraulic data loggers (SR & ID)



HPM6000 Series

- 3 models, offering between 16 & 26 inputs
- Connect Intelligent Digital (ID) and Sensor Recognition (SR) sensors
- Full colour 5.7" display, USB, Ethernet
- Supplied with HPMComm software

Test Stand Instrumentation

Flow, pressure, temperature speed sensors

4 - 20 mA sensors:

On-board electronics to optimise accuracy. Industry standard 4 - 20 mA output. Fast and simple to install. Other analogue outputs available.

Applications:

Condition monitoring, hydraulic test stands, control systems, remote monitoring

CT flow meters



CT - mA Series

- Precision turbine flow meters (1% IR)
- 8 models cover range 0.25 - 400 gpm, up to 7000 psi
- Additional top ports for pressure and temperature
- Other outputs available (mA, V, pulse)

C2000 hydraulic data-acquisition system



C2000 and software

- Complete hydraulic test stand solution
- Includes sensors, hardware, software and training (optional)
- Up to 64 inputs. Choice of mA and frequency
- Display, datalog and produce test certificates

Pressure transducers



MPT Series

- Models cover pressure range up to 10,000 psi.
- Accurate to 0.25% full scale
- Fast response time
- Other outputs available (mA, V)

Speed sensors



SP-TTL Series

- Speed sensor with TTL output
- 0 - 2 kHz magnetic pickup
- Ideal for measuring pump/motor speed
- Connects directly into C2000

Temperature sensors



TP Series

- Max temperature 125 °C / 257 °F
- Rated to 7000 psi
- Fast response time
- Other outputs available (mA, V)

Flow meters - special applications



GF Series

- Precision gear type flow meters (0.5% IR)
- 3 models cover flow range 0.1 - 150 lpm up to 420 bar
- Bidirectional
- 4-20 mA as standard

Want to know more about our product range? Then try our **new** fully searchable multi-language website

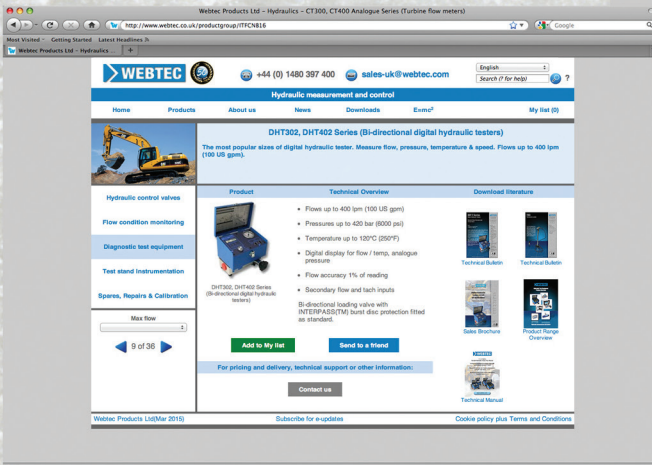
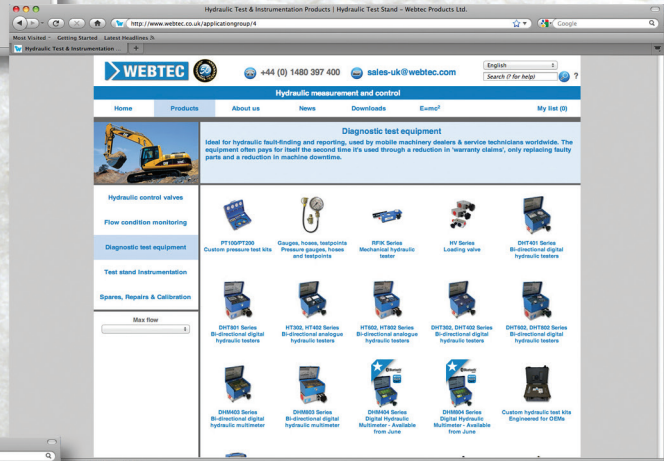


Products page

- Browse using 5 major Application groups
- Featured News panel
- Full website search
- Click to find your local distributor

Product Group Page

- See all available products within your chosen Application group
- Featured videos and case studies
- Refine your search



Your chosen Product

- Download dedicated literature in your chosen language
- Download literature in Adobe pdf format
- Add products to your "Wish List" then request further information

Why not visit us at www.webtec.com and see for yourself

Your Webtec representative:



1290 E. Waterford Ave. Milwaukee, WI 53235, USA
Toll free: 1-800-932-8378, Ph: 414-769-6400, Fax: 414-769-6591

sales-us@webtec.com
www.webtec.com



Webtec reserve the right to make improvements and changes to the specification without notice.